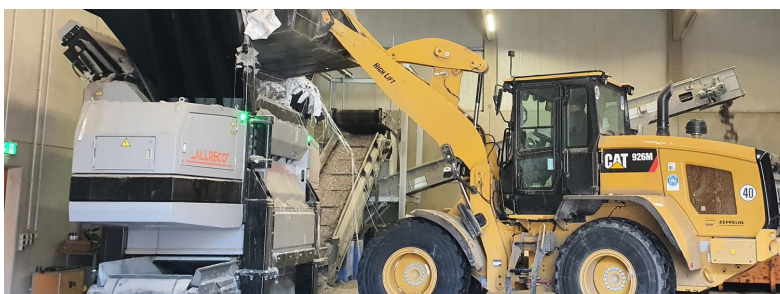


BST 2000

BST	2000
	
Weight	27.000 kg
Length (basic machine)	6.250 mm
Width (basic machine)	3.400 mm
Height (basic machine)	4.200 mm
Drive	2x 176 kW
Loading height	2.850 mm
Outlet height	700 mm
Rotor	
Number	1
Length	2.040 mm
Diameter	800 mm
Number of knives	50 (Rotor) 20 (Stator)
Speed	0-350 rpm

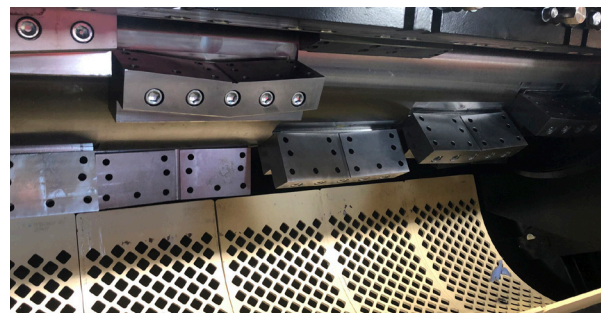
Freely selectable basket size between 10–100 mm.

The technical data are approximate and depends on the machine equipment
(Subject to change without notice).



Applications

The BST shreds everything - from refuse derived fuels to mixed plastic bales and film bales from sorting plants, mixed plastic briquettes, plastic production waste, lightweight packaging, and paper, and cardboard. The BST 2000 has two pushers. Both work independently of each other and thus ensure quite efficiently a jam-free continuous feeding.



All advantages at a glance

- Two independent post-pushers
- Efficient jam-free continuous feeding
- Gearless High-torque motor
- High throughput at low wear
- Output 10–100mm possible
- Feeding with conveyor belt and/or by wheel loader/grab