

Best Solution. Smart recycling

**Mobile-modular
installation for waste
pre-treatment &
processing**

- Mixed construction & demolition waste,
- Commercial waste,
- Waste generated by the interior and/or exterior remodeling and rehabilitation building activities,
- Commercial waste,
- Bulky waste

Overview of the components of the waste processing plant commercial and/or mixed construction and demolition waste



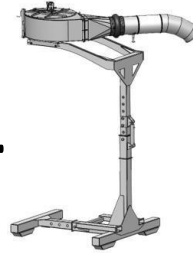
Shredder

*Pre-shredding
Shredding of
the material
Dosing of the
material
Separation of
Fe*



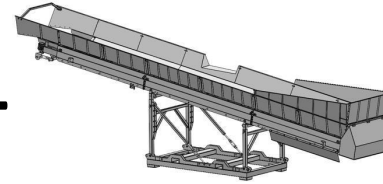
Separator/selector

*Separation by size
and shape
The first separation
of 3-D materials*



Windsifter

*Second separation
of 2-D materials
especially foils and
PPK*



Conveyor

*Stone capture
function Material
transport Material
storage*



Hydraulic pack

*Hydraulic actuation
and control of selector
bands and air
separator*

Shredder



Technical description:

Current drive: CAT C7.1 stage V engine, 205 kW or 200 kW IE3 electric motor

Chassis: on tracks 400 mm

Sound pressure level at a distance of 1 m: L pa 98.9 dB(A)

Weight: 15,700 kg

Length/width/height in mm: 11,219/2,545/4,069

Fuel consumption: approx. 20 l/Bh

Shredding system: rotor size L with 8 teeth, quick and easy to change (shredding system interchangeable in just 45 minutes on site – various sizes available for various applications)

SELECTOR/SEPARATOR



Technical description:

Transmission: Hydraulic motor driven by hydraulic unit

Chassis: Hook lift frame with site chassis

Noise emissions: none, as it does not have its own traction

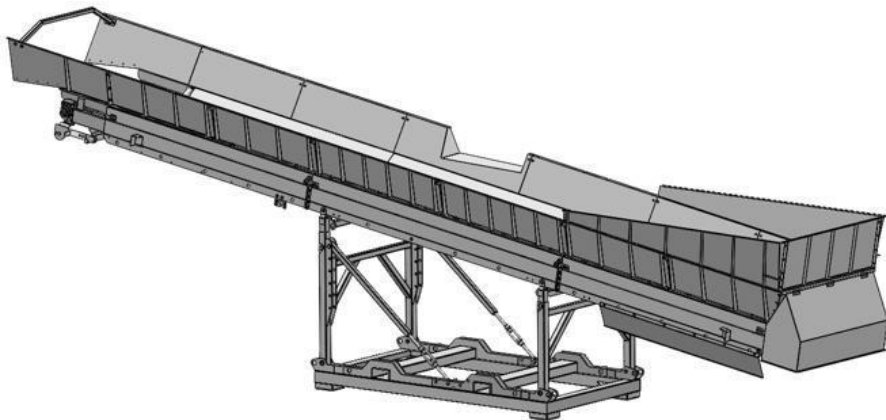
Weight, including axle with spiral shafts: 12,050 kg

Length/Width/Height in mm: 8,700/2,500/3,800 Fuel

consumption: None, as it has no own traction

Separation system: maintenance- and wear-free spiral shafts on a hard deck

CONVEYOR



Technical description:

Drive: Hydraulic motor driven by hydraulic unit

Continuously variable belt speed

Undercarriage: Fixing device for forklift insert

Belt length: 8,500 mm

Belt pitch: Variably adjustable

Noise emissions: Not relevant as no there is a unit of its own

Weight: 1,150 kg

Fuel consumption: none, as there is no self-drive

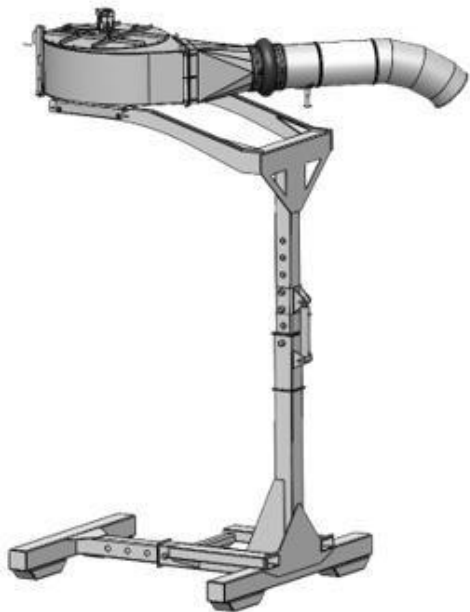
The purpose of mobile conveyor in the system concept

Transporting material to other equipment

Storage in discharge cones

Equalization of material flow

WINDSIFTER on a hydraulically adjustable height frame



Technical description:

Drive: hydraulic motor driven by hydraulic unit

Suction power: continuously variable

Height above selector: variable

Chassis: transport frame with forklift supports

Noise emissions: Not relevant as there is no drive system of its own

Weight: 490 kg

Fuel consumption: none, as there is no self-drive

The purpose of the air separator in the system concept

Extraction of films and other 2D contaminants

HYDRAULIC UNIT



Technical description:

Current drive: Deutz 3.6 diesel engine; stage V, 90 kW

Future drive: electric motor

Sound pressure level at a distance of 1 m:

L_{pa} 90.9 dB(A)

Chassis: Forklift and chain support

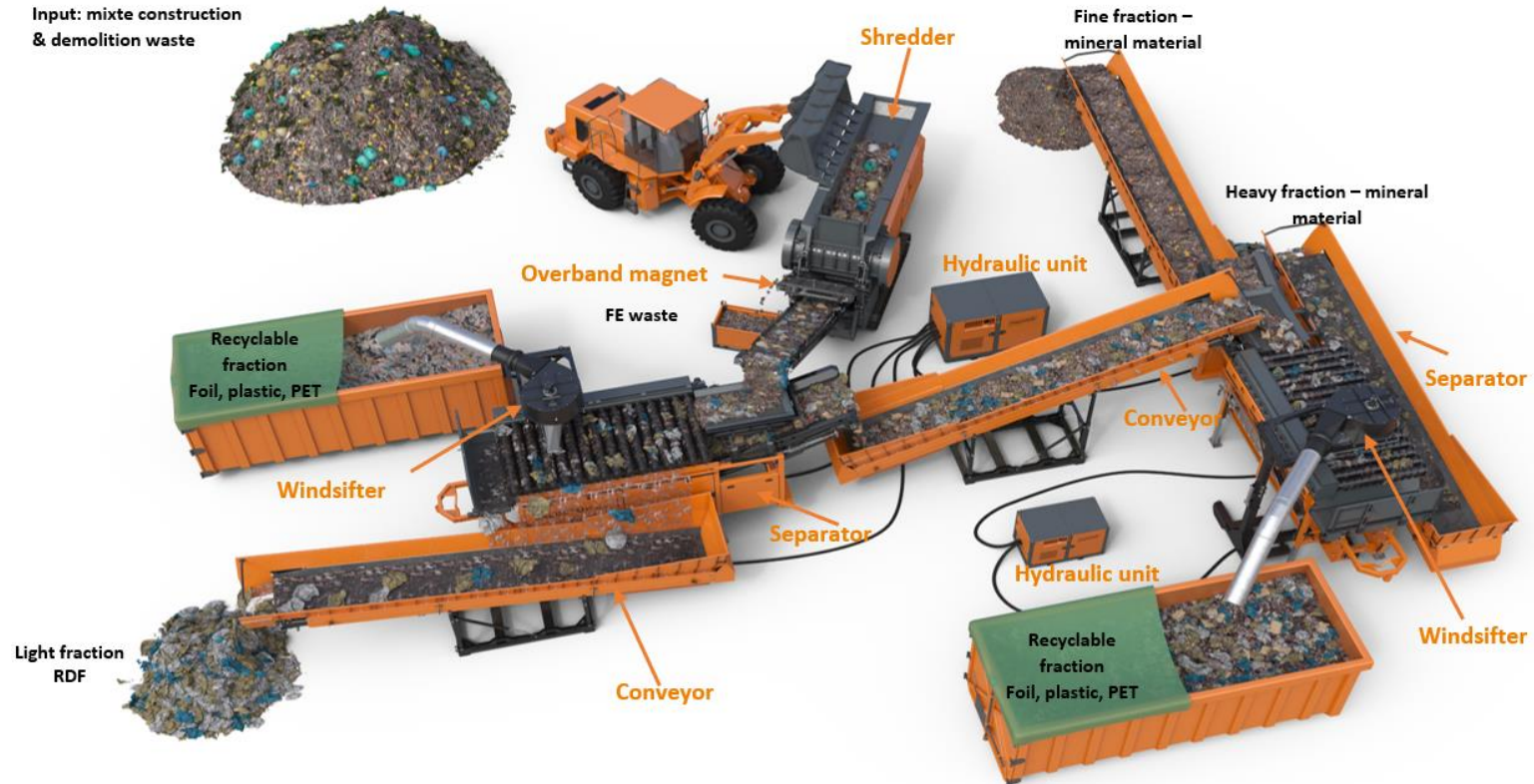
Weight: 2,050 kg

Fuel consumption: 5 l / Bh

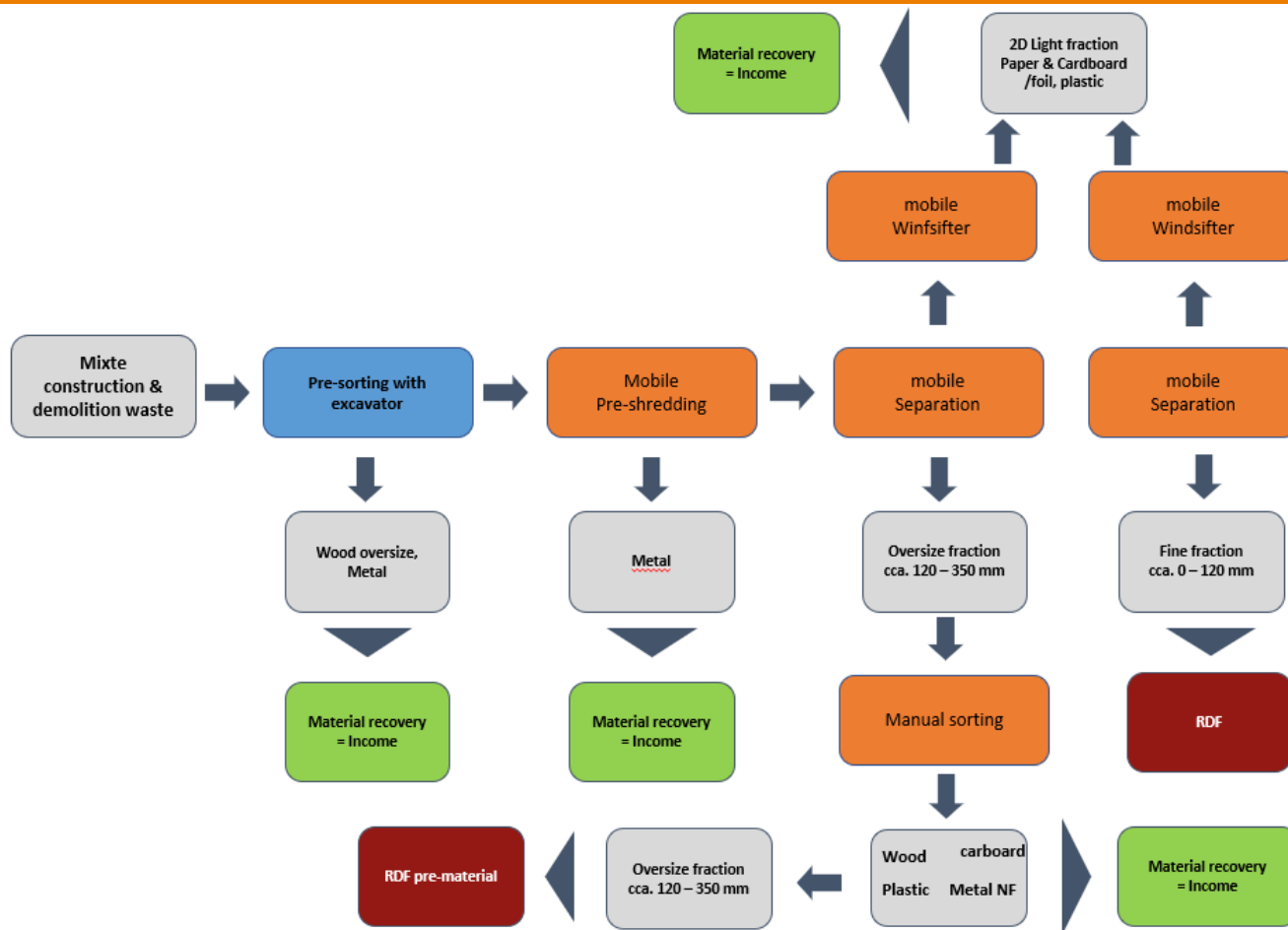
The purpose of the hydraulic unit within the system concept

Acting as well as regulating and controlling all equipment except the shredder

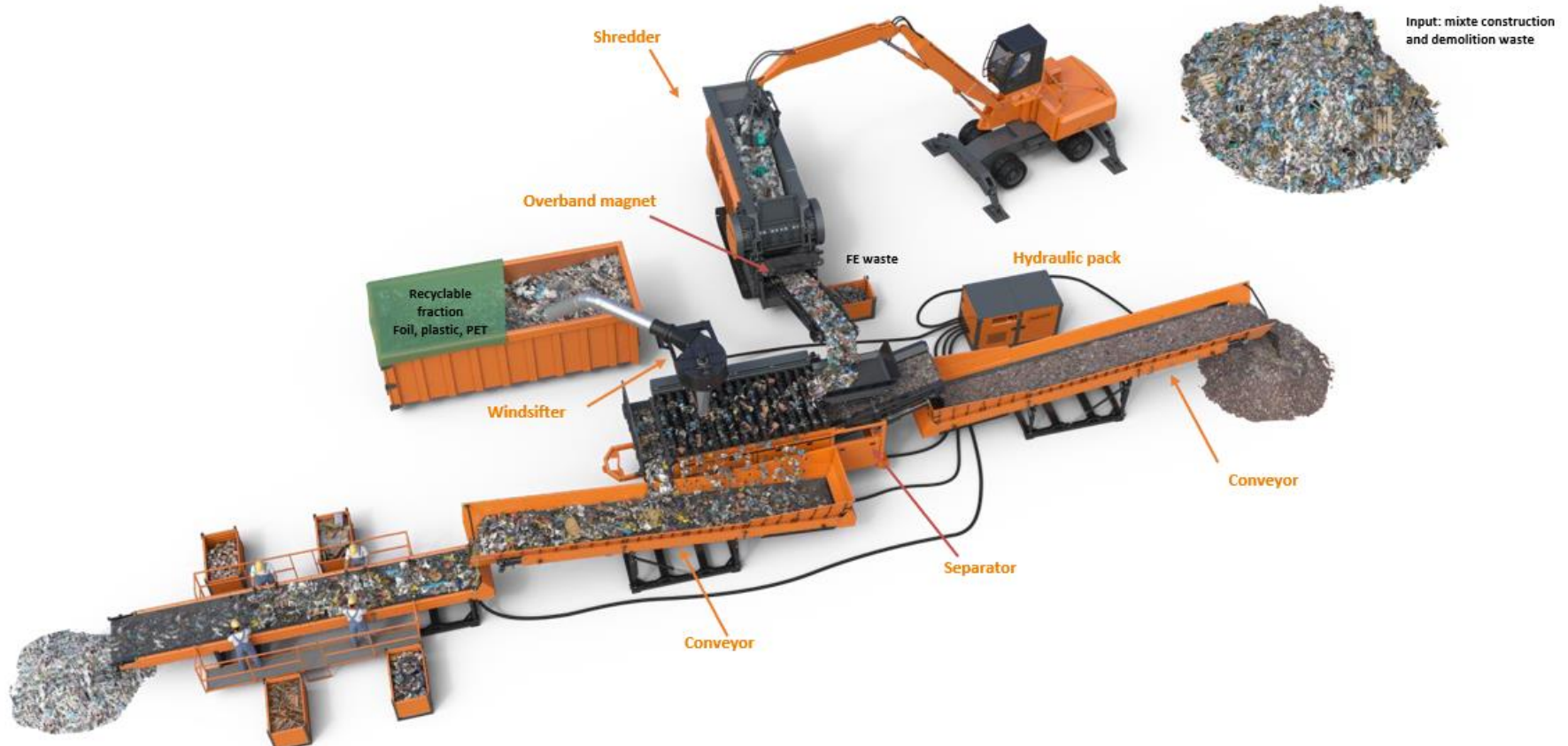
Scheme of the installation - Processing of mixed waste from construction and demolition

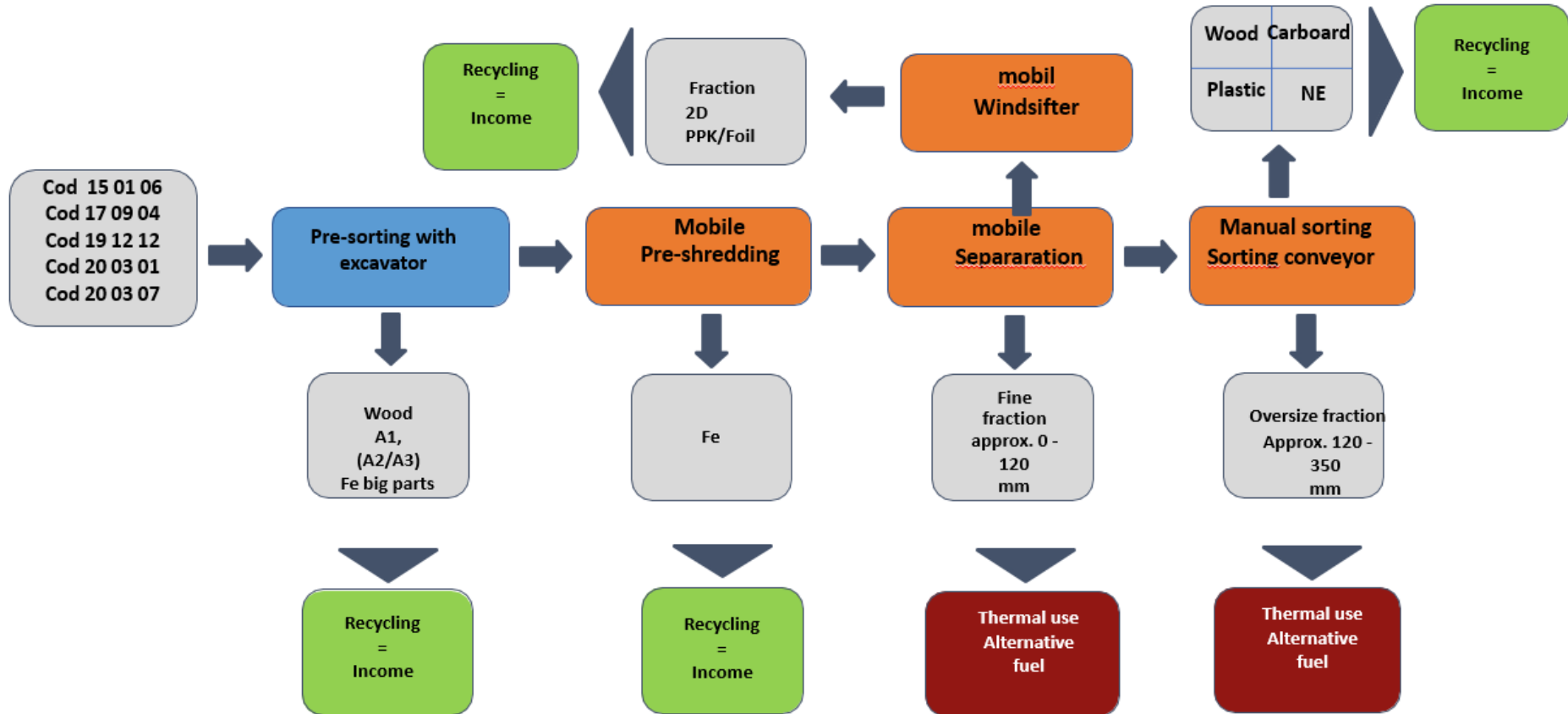


Flow - Mixed waste from construction and demolition



Setting up the installation for processing commercial waste / bulky waste



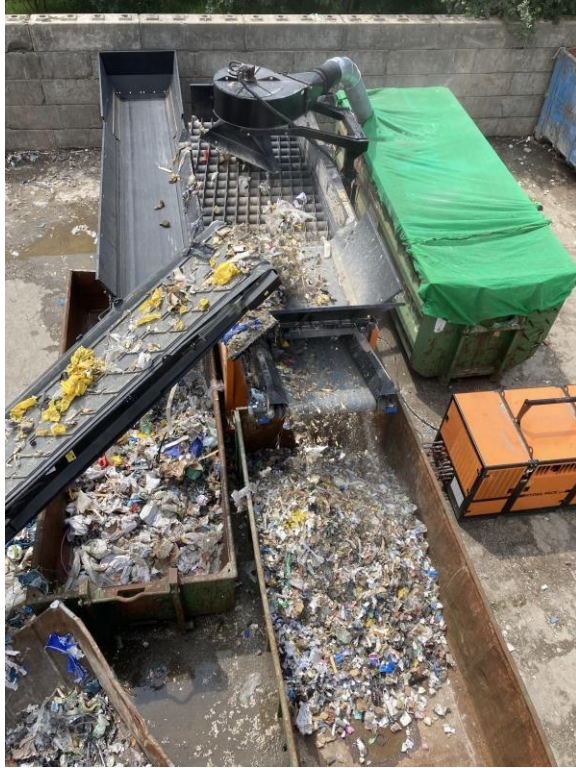




Commercial Waste / bulky waste

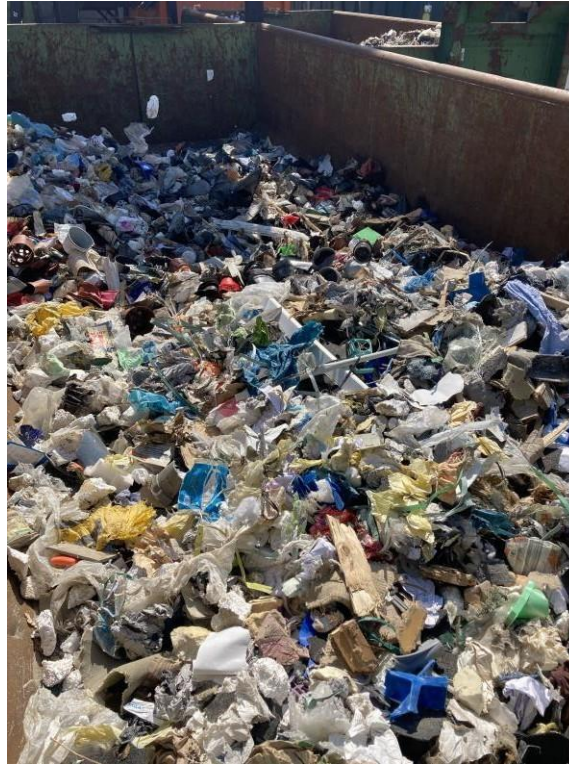
Mixed construction site waste
Mineral content approx. 70%



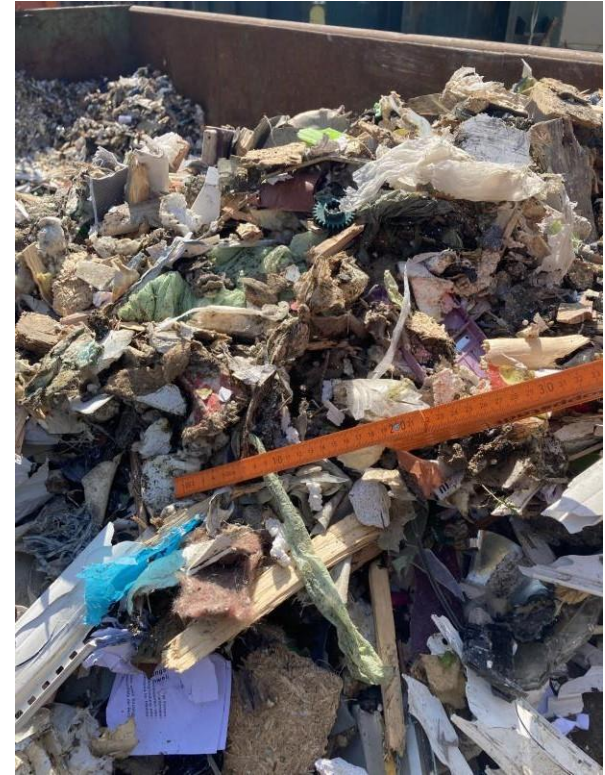




Foil fraction obtained with the windsifter



Underflow selector (RDF)



Overflow selector



Fe fraction – extracted with the magnet



The fine fraction under the selector



Coarse fraction mineral materials

Scheme of the facility – Processing of mixed construction waste

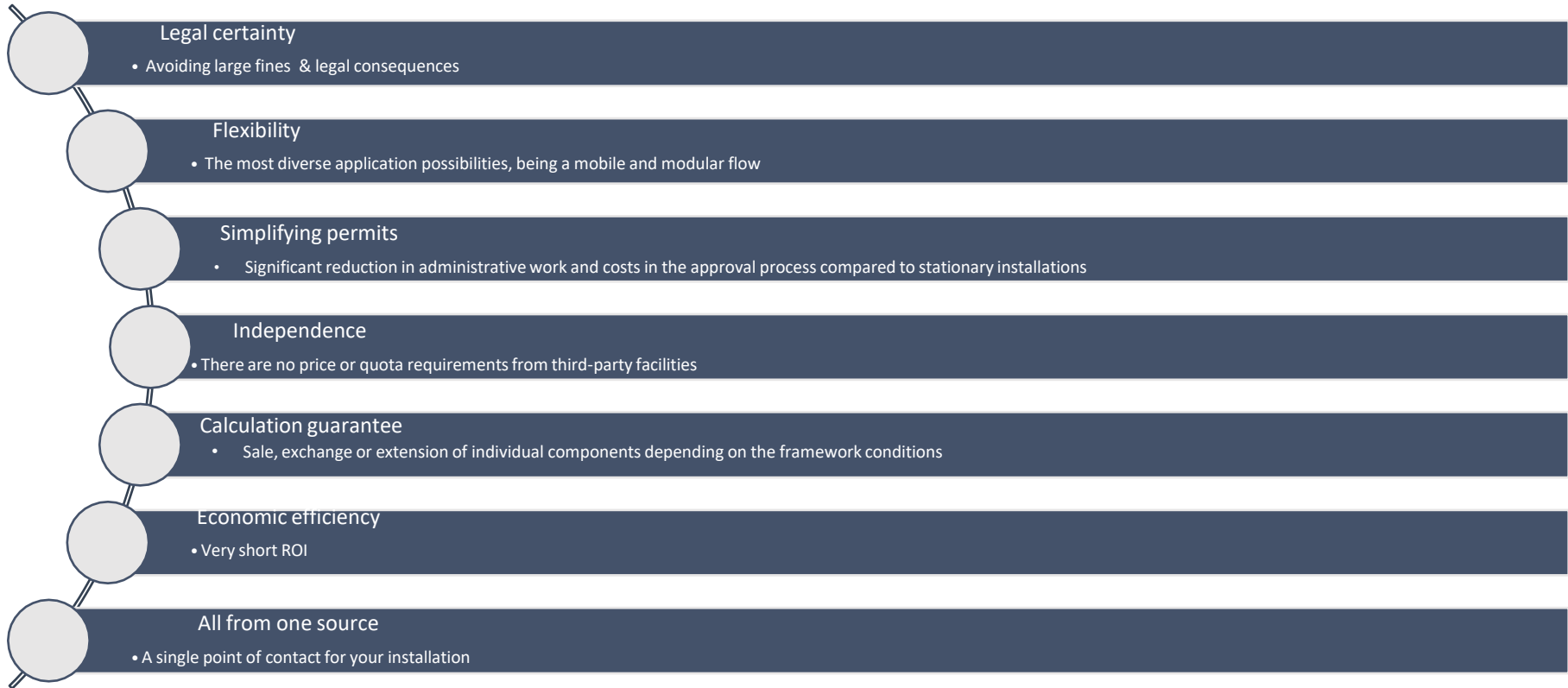


uni-recycling

Doppstadt



Our solution: Your advantages at a glance



For details please contact us at:



Adresa:

Sediul social:

Str. Jean Monnet, nr. 16, Sector 1, Bucuresti
RO-011957

Punct de lucru & Birouri

Sat Meri, Comuna Draganesti, Judetul Prahova
RO-107216

Tel: +4 021 223 53 66

Fax: +4 021 223 53 67

E-mail:

office@uni-recycling.ro

www.uni-recycling.ro